

KEY

- Powys County Council
 - Brecon Beacons National Park Authority- see separate mapping
 - Snowdonia National Park
 - NRW Recorded Flood Extents
- Number of sewer flooding incidents by ward
- | | | | |
|--|---------|--|-------|
| | No data | | 10-25 |
| | 1 - 5 | | 25-30 |
| | 5-10 | | >30 |

Notes
 If no data is displayed on the map, or not all features are present, this indicates that the respective flood source or features are not present within this area.
 Sewer flooding data has been supplied by Dŵr Cymru Welsh Water and Severn Trent Water Limited

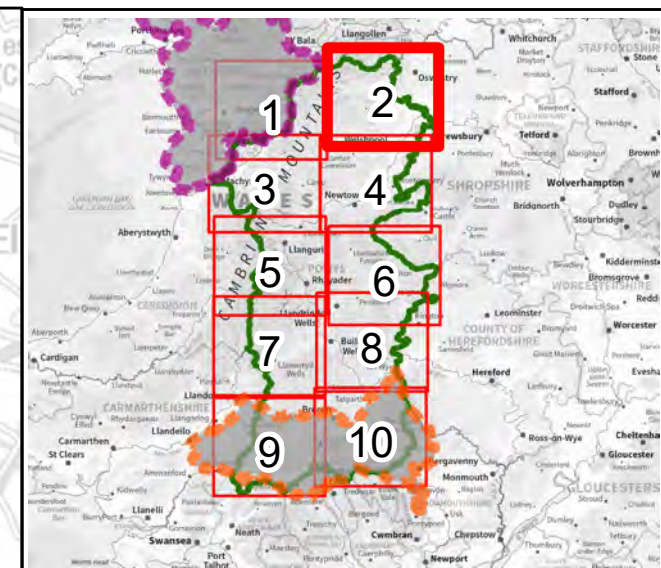
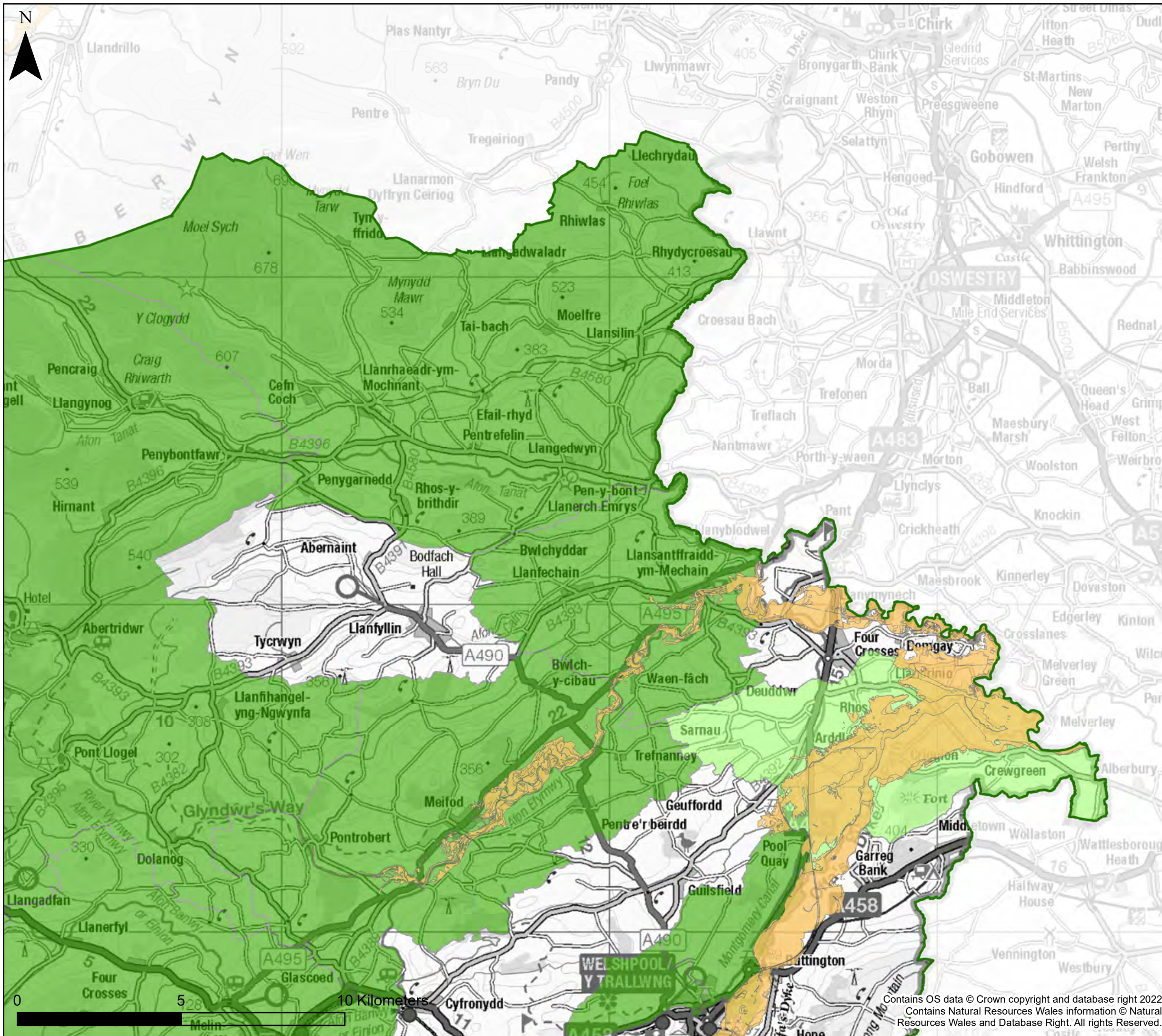


Powys County Council
 Stage 1 Strategic Flood Consequences Assessment
Historic Flooding

This document is the property of Jeremy Benn Associates Ltd. It shall not be reproduced in whole or in part, nor disclosed to a third party, without the permission of Jeremy Benn Associates Ltd.

Page number	Drawn	HB	28/10/2022
1 of 10	Checked	CB	07/11/2022
	Approved	GB	08/11/2022

Contains OS data © Crown copyright and database right 2022
 Contains Natural Resources Wales information © Natural Resources Wales and Database Right. All rights Reserved.



KEY

- Powys County Council
 - Brecon Beacons National Park Authority- see separate mapping
 - Snowdonia National Park
 - NRW Recorded Flood Extents
- Number of sewer flooding incidents by ward
- | | | | |
|--|---------|--|-------|
| | No data | | 10-25 |
| | 1 - 5 | | 25-30 |
| | 5-10 | | >30 |

Notes
 If no data is displayed on the map, or not all features are present, this indicates that the respective flood source or features are not present within this area.
 Sewer flooding data has been supplied by Dŵr Cymru Welsh Water and Severn Trent Water Limited

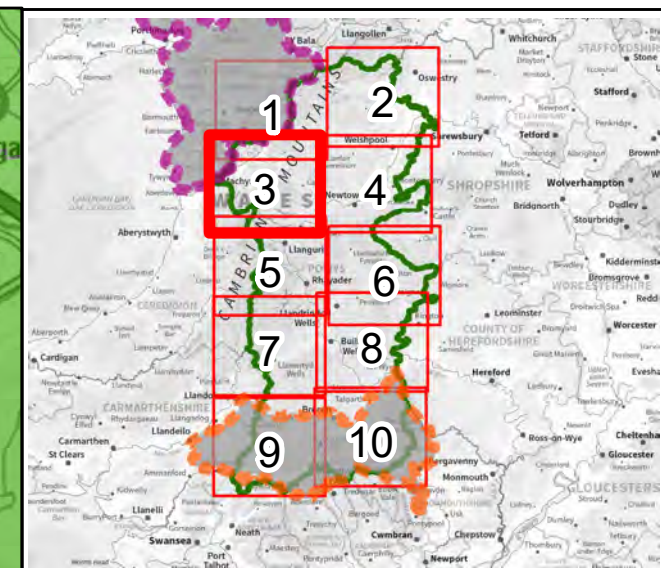
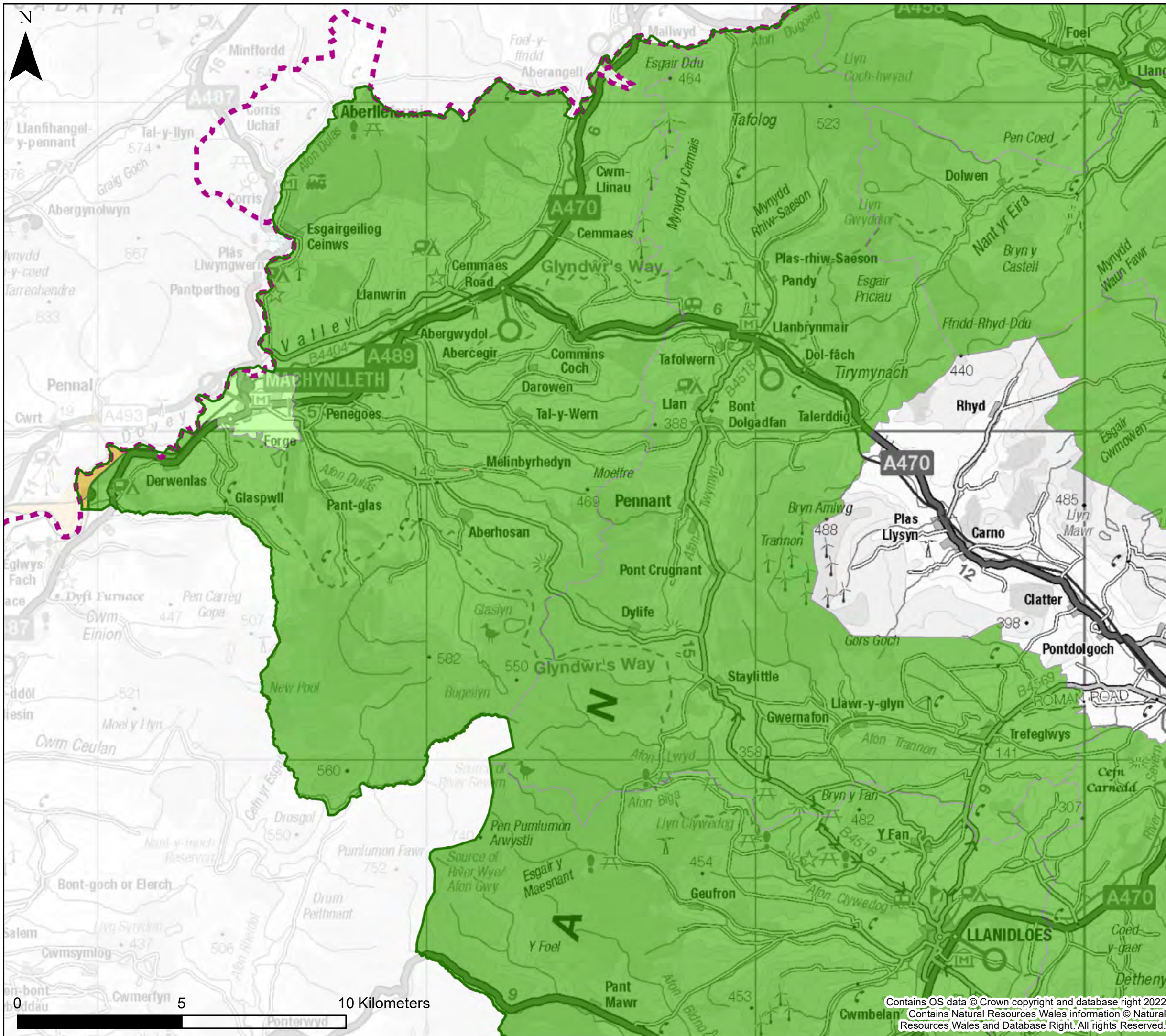


Powys County Council
Stage 1 Strategic Flood Consequences Assessment
Historic Flooding

This document is the property of Jeremy Benn Associates Ltd. It shall not be reproduced in whole or in part, nor disclosed to a third party, without the permission of Jeremy Benn Associates Ltd.

Page number	Drawn	HB	28/10/2022
2 of 10	Checked	CB	07/11/2022
	Approved	GB	08/11/2022

Contains OS data © Crown copyright and database right 2022
 Contains Natural Resources Wales information © Natural Resources Wales and Database Right. All rights Reserved.



KEY

- Powys County Council
 - Brecon Beacons National Park Authority- see separate mapping
 - Snowdonia National Park
 - NRW Recorded Flood Extents
- Number of sewer flooding incidents by ward
- | | | | |
|--|---------|--|-------|
| | No data | | 10-25 |
| | 1 - 5 | | 25-30 |
| | 5-10 | | >30 |

Notes
 If no data is displayed on the map, or not all features are present, this indicates that the respective flood source or features are not present within this area.
 Sewer flooding data has been supplied by Dŵr Cymru Welsh Water and Severn Trent Water Limited

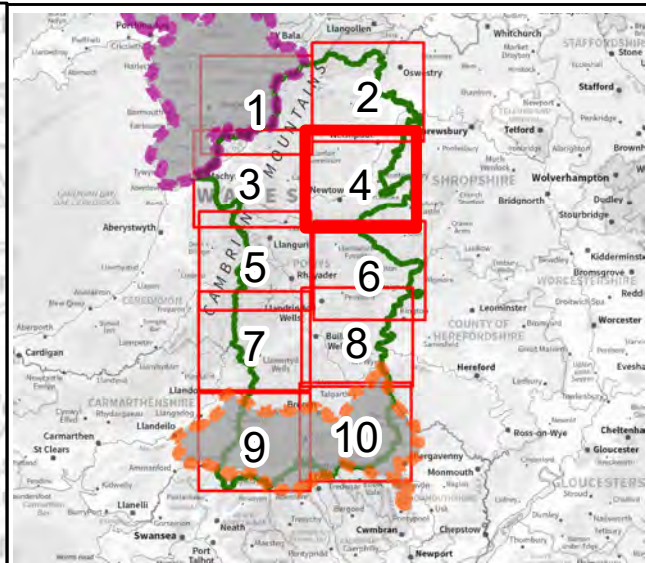
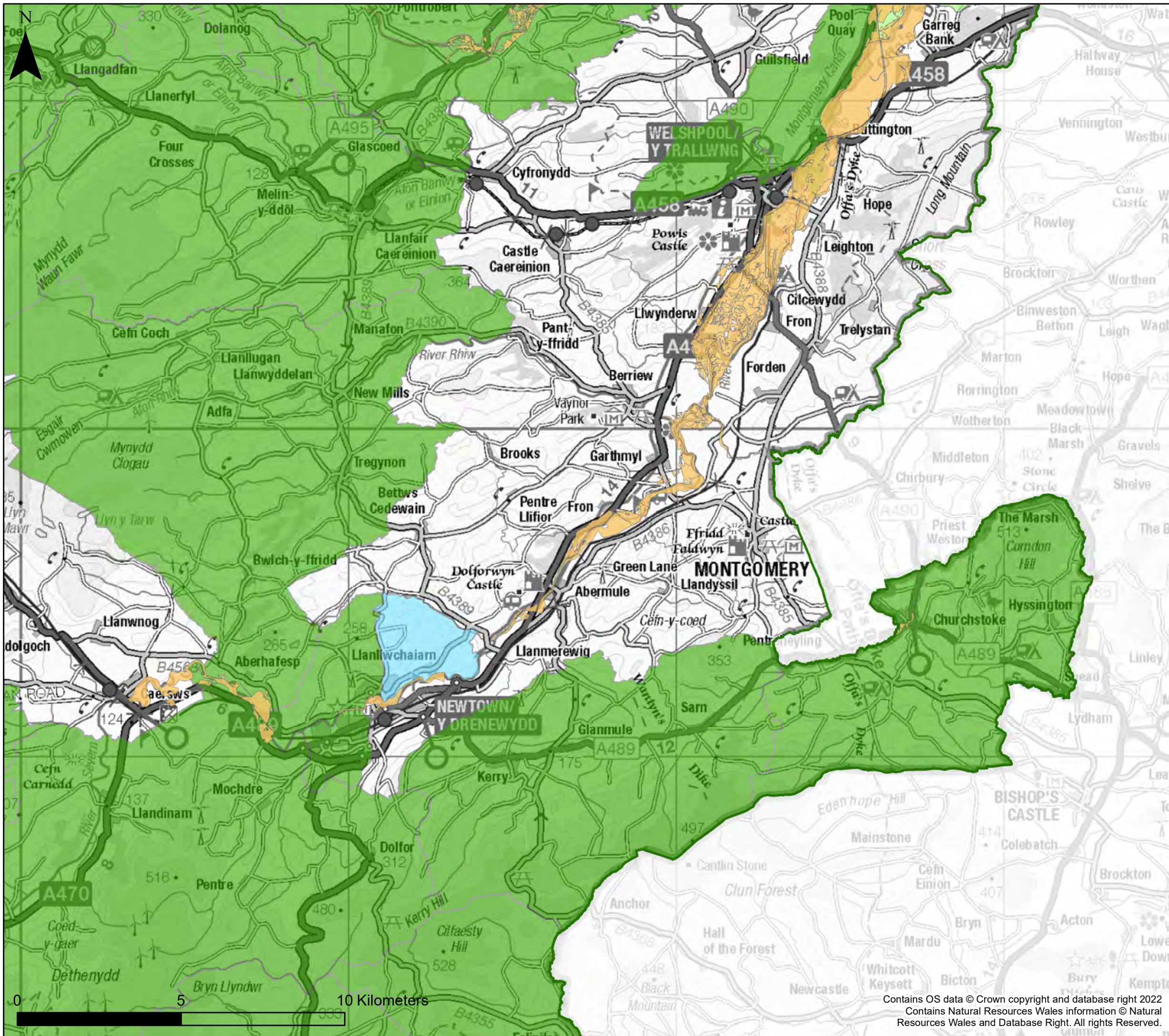


Powys County Council
Stage 1 Strategic Flood Consequences Assessment
Historic Flooding

This document is the property of Jeremy Benn Associates Ltd. It shall not be reproduced in whole or in part, nor disclosed to a third party, without the permission of Jeremy Benn Associates Ltd.

Page number	Drawn	HB	28/10/2022
3 of 10	Checked	CB	07/11/2022
	Approved	GB	08/11/2022

Contains OS data © Crown copyright and database right 2022
 Contains Natural Resources Wales information © Natural Resources Wales and Database Right. All rights Reserved.



KEY

- Powys County Council
 - Brecon Beacons National Park Authority- see separate mapping
 - Snowdonia National Park
 - NRW Recorded Flood Extents
- Number of sewer flooding incidents by ward
- | | | | |
|--|---------|--|-------|
| | No data | | 10-25 |
| | 1 - 5 | | 25-30 |
| | 5-10 | | >30 |

Notes
 If no data is displayed on the map, or not all features are present, this indicates that the respective flood source or features are not present within this area.
 Sewer flooding data has been supplied by Dŵr Cymru Welsh Water and Severn Trent Water Limited

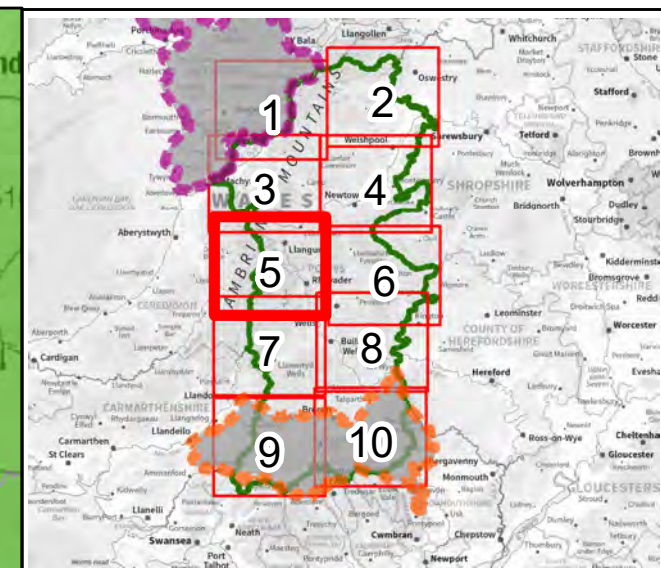
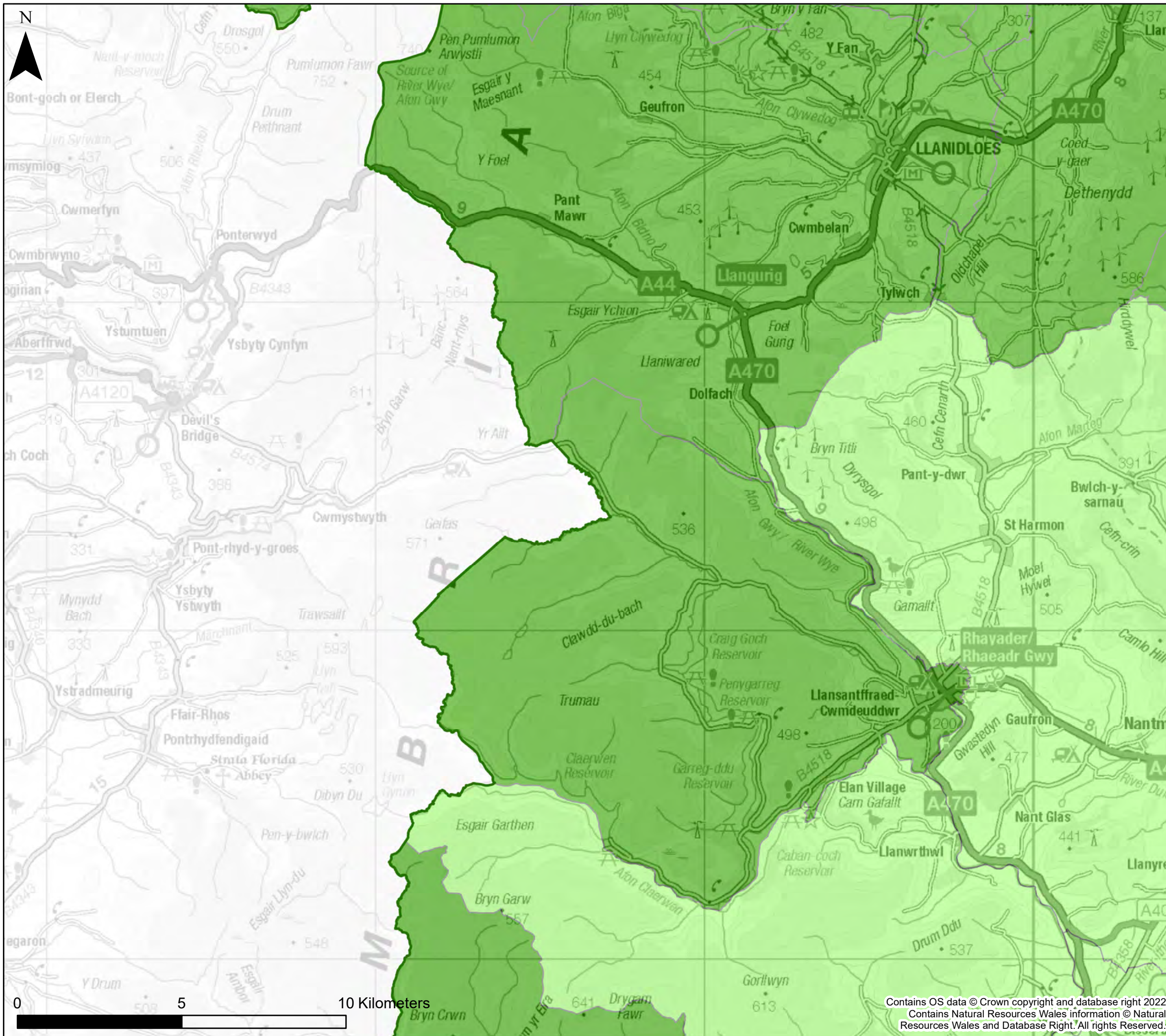


Powys County Council
 Stage 1 Strategic Flood Consequences Assessment
 Historic Flooding

This document is the property of Jeremy Benn Associates Ltd. It shall not be reproduced in whole or in part, nor disclosed to a third party, without the permission of Jeremy Benn Associates Ltd.

Page number	Drawn	HB	28/10/2022
4 of 10	Checked	CB	07/11/2022
	Approved	GB	08/11/2022

Contains OS data © Crown copyright and database right 2022
 Contains Natural Resources Wales information © Natural Resources Wales and Database Right. All rights Reserved.



KEY

- Powys County Council
 - Brecon Beacons National Park Authority- see separate mapping
 - Snowdonia National Park
 - NRW Recorded Flood Extents
- Number of sewer flooding incidents by ward
- | | | | |
|--|---------|--|-------|
| | No data | | 10-25 |
| | 1 - 5 | | 25-30 |
| | 5-10 | | >30 |

Notes
 If no data is displayed on the map, or not all features are present, this indicates that the respective flood source or features are not present within this area.
 Sewer flooding data has been supplied by Dŵr Cymru Welsh Water and Severn Trent Water Limited

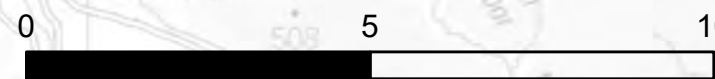


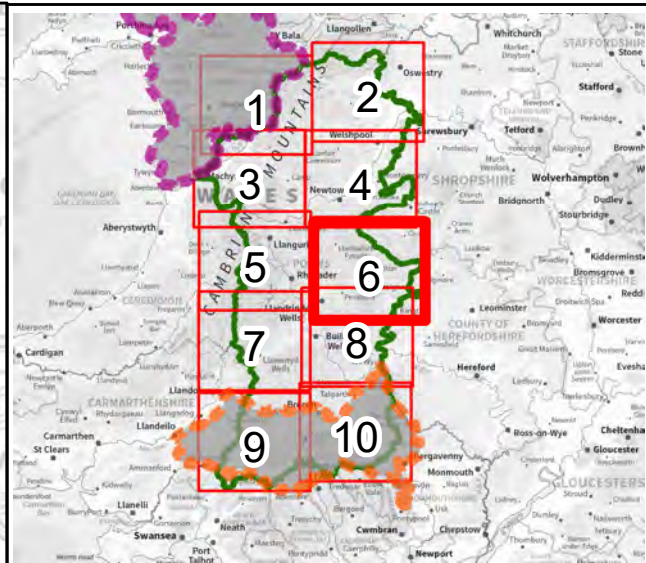
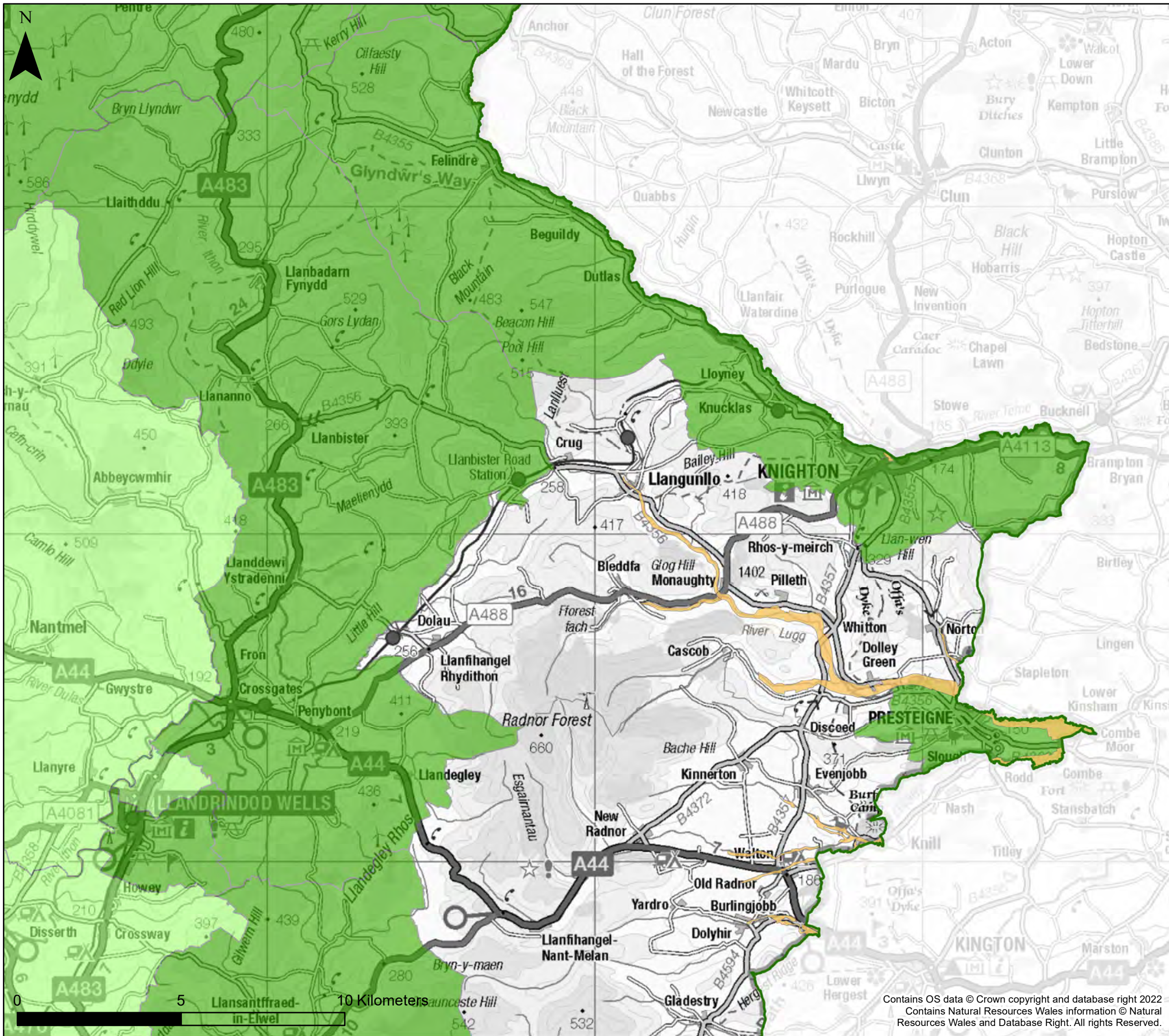
Powys County Council
Stage 1 Strategic Flood Consequences Assessment
Historic Flooding

This document is the property of Jeremy Benn Associates Ltd. It shall not be reproduced in whole or in part, nor disclosed to a third party, without the permission of Jeremy Benn Associates Ltd.

Page number	Drawn	HB	28/10/2022
5 of 10	Checked	CB	07/11/2022
	Approved	GB	08/11/2022

Contains OS data © Crown copyright and database right 2022
 Contains Natural Resources Wales information © Natural Resources Wales and Database Right. All rights Reserved.





KEY

- Powys County Council
 - Brecon Beacons National Park Authority- see separate mapping
 - Snowdonia National Park
 - NRW Recorded Flood Extents
- Number of sewer flooding incidents by ward
- | | | | |
|--|---------|--|-------|
| | No data | | 10-25 |
| | 1 - 5 | | 25-30 |
| | 5-10 | | >30 |

Notes
 If no data is displayed on the map, or not all features are present, this indicates that the respective flood source or features are not present within this area.
 Sewer flooding data has been supplied by Dŵr Cymru Welsh Water and Severn Trent Water Limited

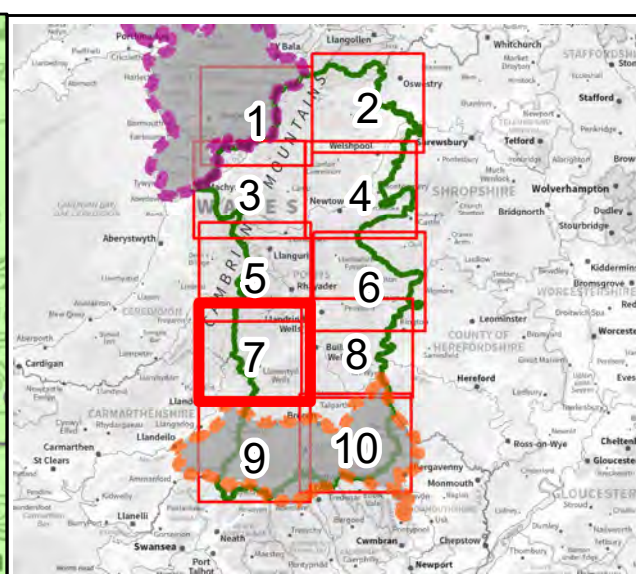
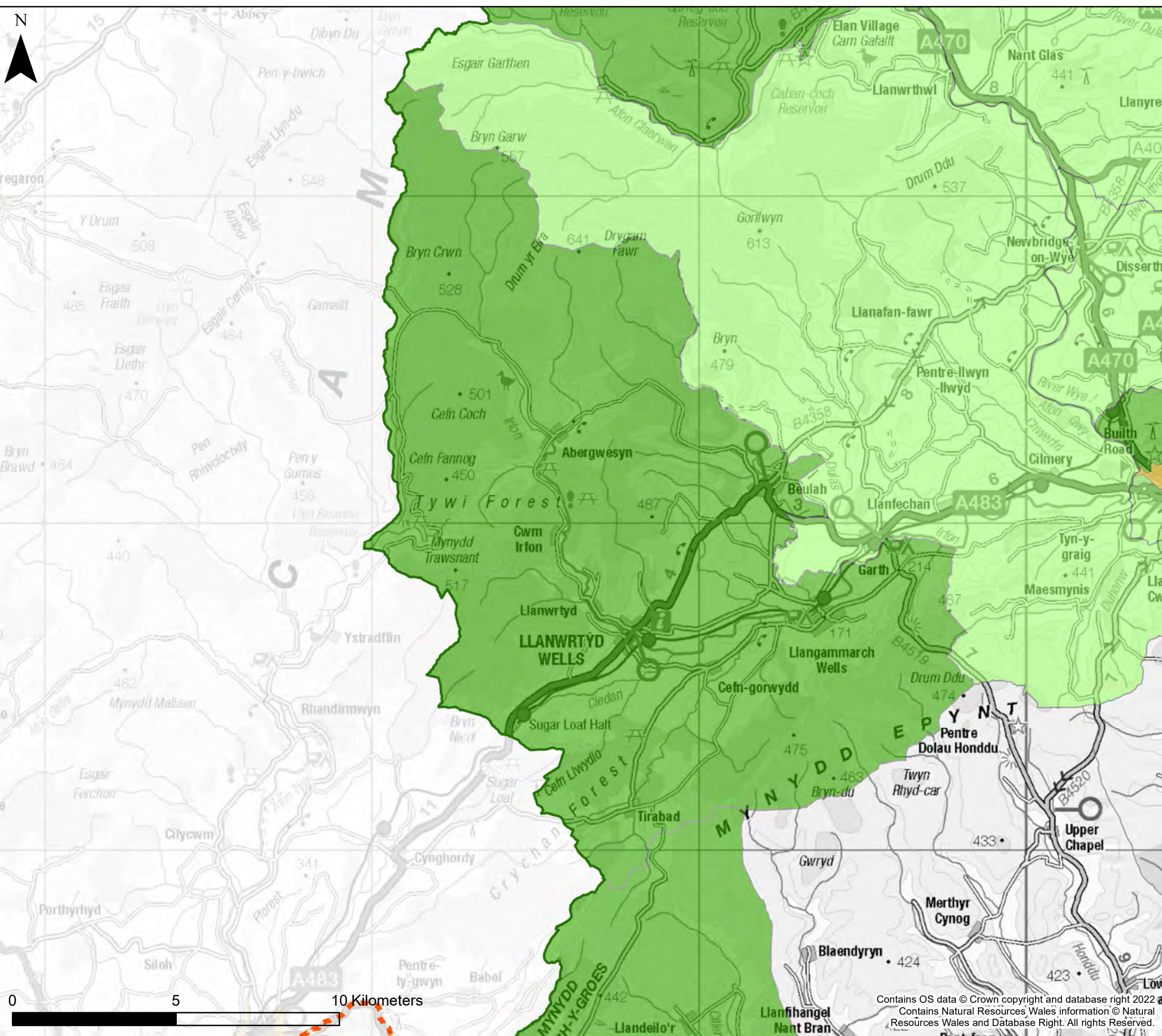


Powys County Council
 Stage 1 Strategic Flood Consequences Assessment
Historic Flooding

This document is the property of Jeremy Benn Associates Ltd. It shall not be reproduced in whole or in part, nor disclosed to a third party, without the permission of Jeremy Benn Associates Ltd.

Page number	Drawn	HB	28/10/2022
6 of 10	Checked	CB	07/11/2022
	Approved	GB	08/11/2022

Contains OS data © Crown copyright and database right 2022
 Contains Natural Resources Wales information © Natural Resources Wales and Database Right. All rights Reserved.



KEY

- Powys County Council
 - Brecon Beacons National Park Authority- see separate mapping
 - Snowdonia National Park
 - NRW Recorded Flood Extents
- Number of sewer flooding incidents by ward
- | | | | |
|--|---------|--|-------|
| | No data | | 10-25 |
| | 1 - 5 | | 25-30 |
| | 5-10 | | >30 |

Notes
 If no data is displayed on the map, or not all features are present, this indicates that the respective flood source or features are not present within this area.
 Sewer flooding data has been supplied by Dŵr Cymru Welsh Water and Severn Trent Water Limited



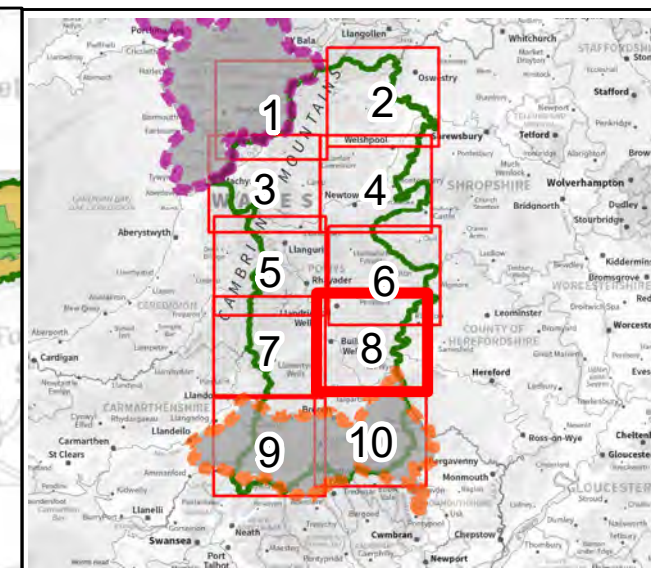
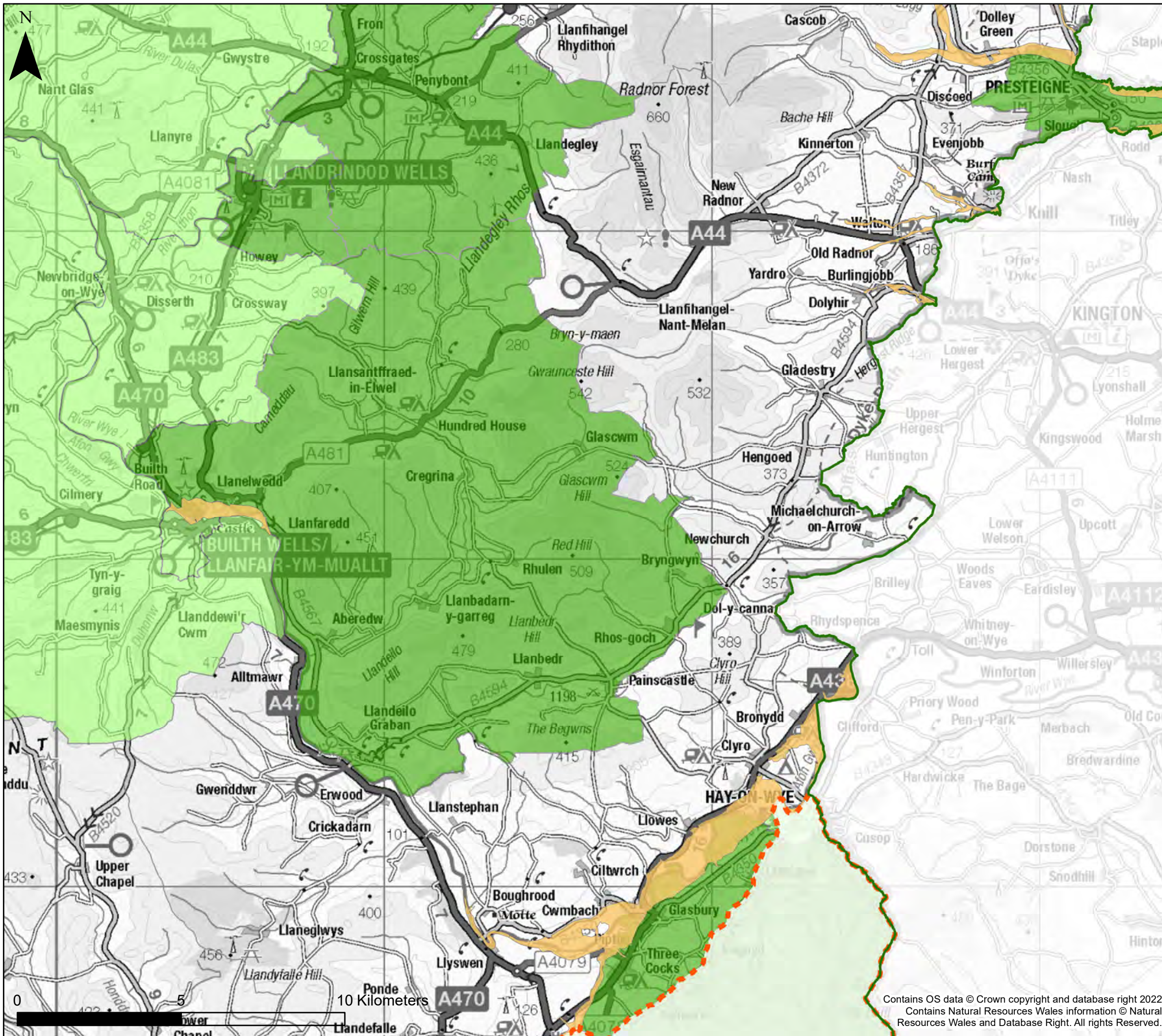
Powys County Council
Stage 1 Strategic Flood Consequences Assessment
Historic Flooding

This document is the property of Jeremy Benn Associates Ltd. It shall not be reproduced in whole or in part, nor disclosed to a third party, without the permission of Jeremy Benn Associates Ltd.

Page number	Drawn	HB	28/10/2022
7 of 10	Checked	CB	07/11/2022
	Approved	GB	08/11/2022

Contains OS data © Crown copyright and database right 2022
 Contains Natural Resources Wales information © Natural Resources Wales and Database Right. All rights Reserved.





KEY

- Powys County Council
 - Brecon Beacons National Park Authority- see separate mapping
 - Snowdonia National Park
 - NRW Recorded Flood Extents
- Number of sewer flooding incidents by ward
- | | | | |
|--|---------|--|-------|
| | No data | | 10-25 |
| | 1 - 5 | | 25-30 |
| | 5-10 | | >30 |

Notes
 If no data is displayed on the map, or not all features are present, this indicates that the respective flood source or features are not present within this area.
 Sewer flooding data has been supplied by Dŵr Cymru Welsh Water and Severn Trent Water Limited

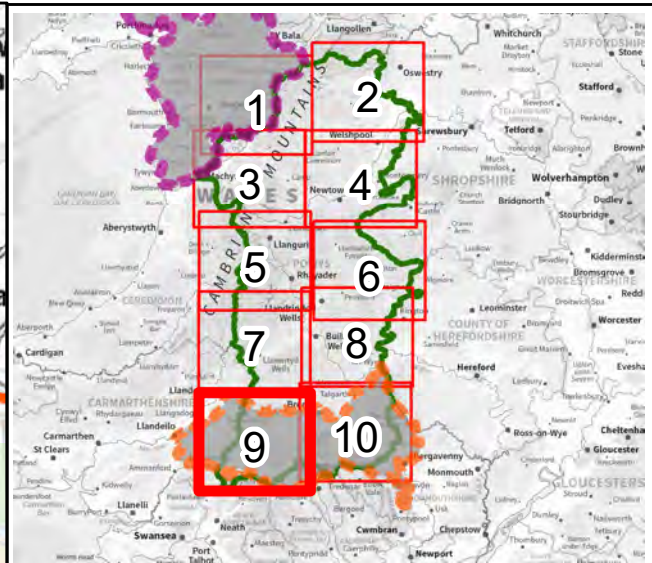
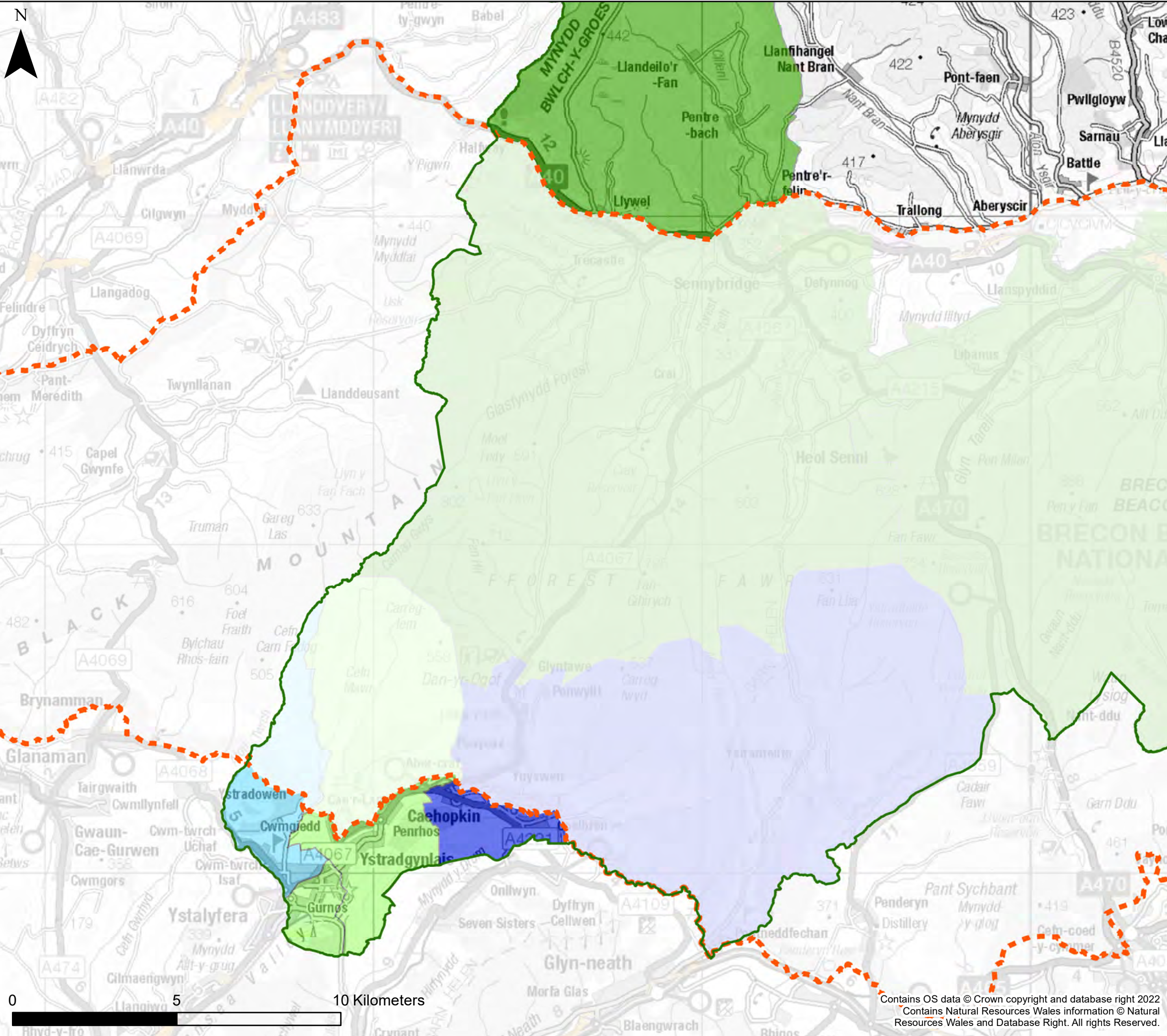


Powys County Council
 Stage 1 Strategic Flood Consequences Assessment
Historic Flooding

This document is the property of Jeremy Benn Associates Ltd. It shall not be reproduced in whole or in part, nor disclosed to a third party, without the permission of Jeremy Benn Associates Ltd.

Page number	Drawn	HB	28/10/2022
8 of 10	Checked	CB	07/11/2022
	Approved	GB	08/11/2022

Contains OS data © Crown copyright and database right 2022
 Contains Natural Resources Wales information © Natural Resources Wales and Database Right. All rights Reserved.



KEY

- Powys County Council
 - Brecon Beacons National Park
 - Authority- see separate mapping
 - Snowdonia National Park
 - NRW Recorded Flood Extents
- Number of sewer flooding incidents by ward
- | | | | |
|--|---------|--|-------|
| | No data | | 10-25 |
| | 1 - 5 | | 25-30 |
| | 5-10 | | >30 |

Notes
 If no data is displayed on the map, or not all features are present, this indicates that the respective flood source or features are not present within this area.
 Sewer flooding data has been supplied by Dŵr Cymru Welsh Water and Severn Trent Water Limited

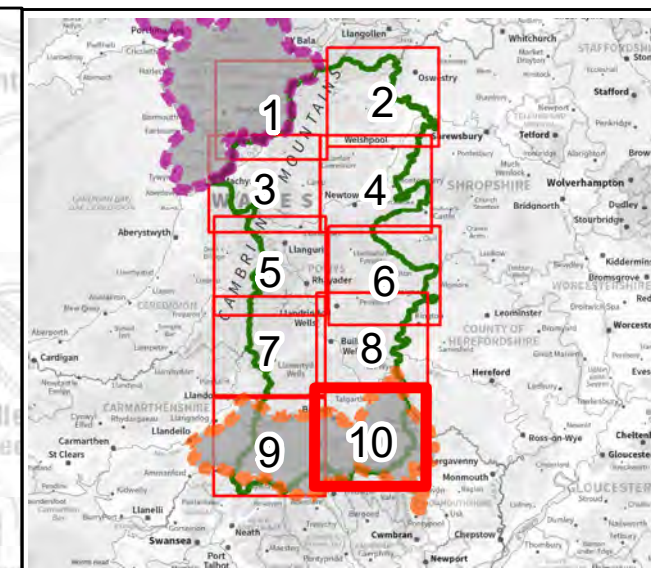
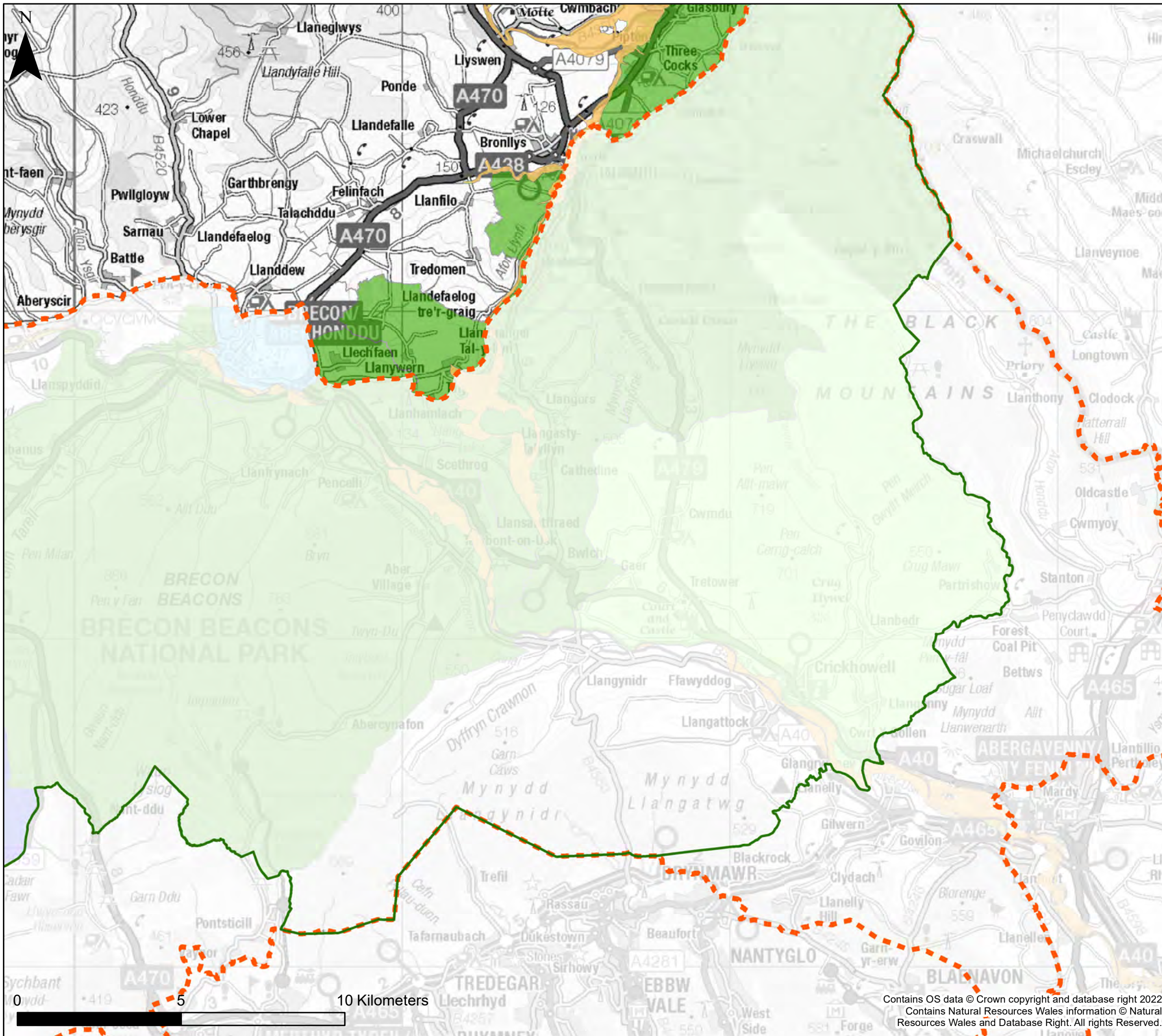


Powys County Council
Stage 1 Strategic Flood
Consequences Assessment
Historic Flooding

This document is the property of Jeremy Benn Associates Ltd. It shall not be reproduced in whole or in part, nor disclosed to a third party, without the permission of Jeremy Benn Associates Ltd.

Page number	Drawn	HB	28/10/2022
9 of 10	Checked	CB	07/11/2022
	Approved	GB	08/11/2022

Contains OS data © Crown copyright and database right 2022
 Contains Natural Resources Wales information © Natural Resources Wales and Database Right. All rights Reserved.



KEY

- Powys County Council
 - Brecon Beacons National Park Authority- see separate mapping
 - Snowdonia National Park
 - NRW Recorded Flood Extents
- Number of sewer flooding incidents by ward
- | | | | |
|--|---------|--|-------|
| | No data | | 10-25 |
| | 1 - 5 | | 25-30 |
| | 5-10 | | >30 |

Notes
 If no data is displayed on the map, or not all features are present, this indicates that the respective flood source or features are not present within this area.
 Sewer flooding data has been supplied by Dŵr Cymru Welsh Water and Severn Trent Water Limited



Powys County Council
Stage 1 Strategic Flood Consequences Assessment
Historic Flooding

This document is the property of Jeremy Benn Associates Ltd. It shall not be reproduced in whole or in part, nor disclosed to a third party, without the permission of Jeremy Benn Associates Ltd.

Page number	Drawn	HB	28/10/2022
10 of 10	Checked	CB	07/11/2022
	Approved	GB	08/11/2022

Contains OS data © Crown copyright and database right 2022
 Contains Natural Resources Wales information © Natural Resources Wales and Database Right. All rights Reserved.